

State of Wyoming Corner Record

(In compliance with the CORNER PERPETUATION AND FILING ACT, Wyoming Statutes, 1977, Section 36-11-101, et. seq., and the Rules and Regulations of the Board of Registration for Professional Engineers and Professional Land Surveyors)

Reverse side of this form may be used if more space is needed.

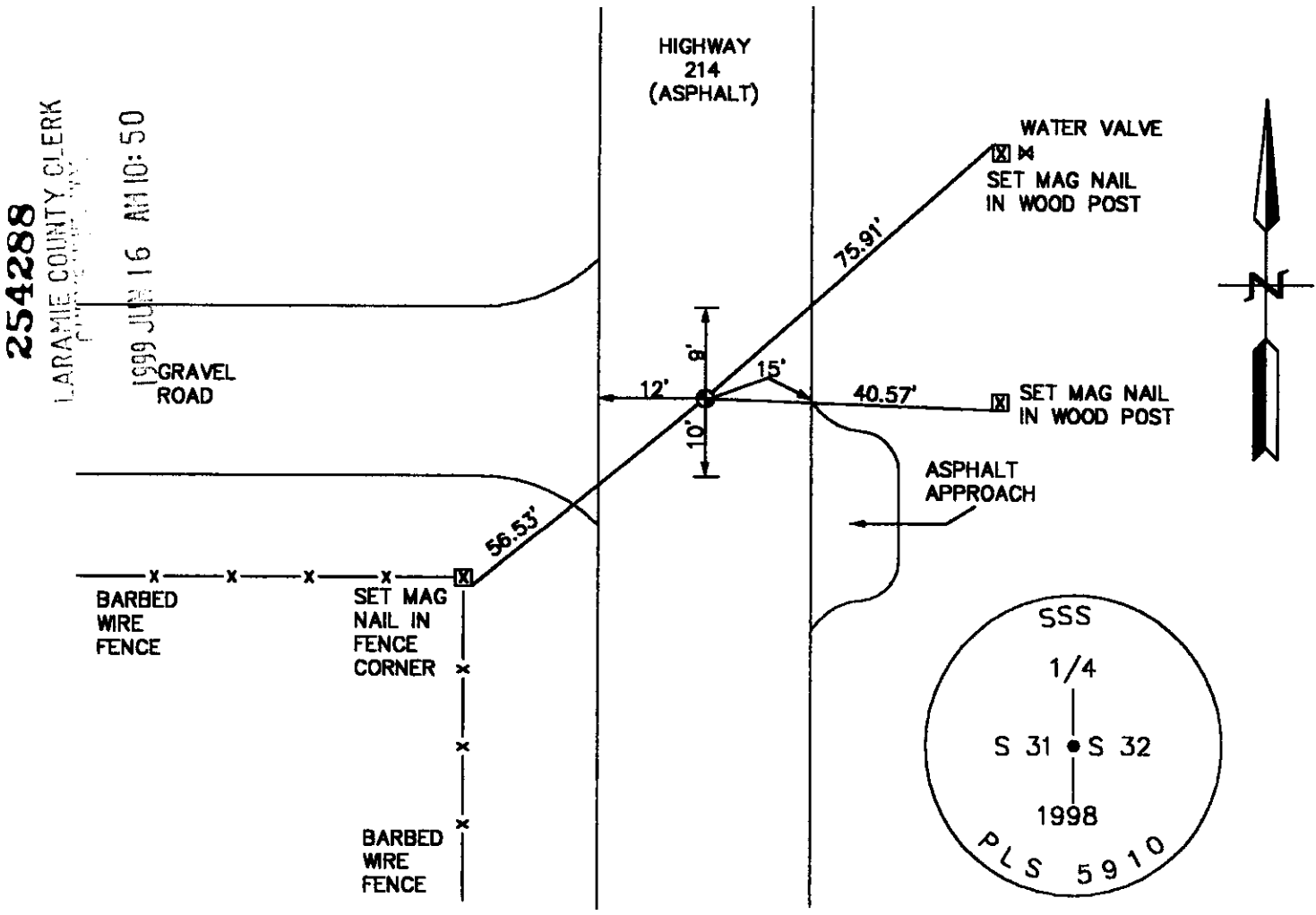
Record of original survey and citation of source of historical information (if corner is lost or obliterated). Description of corner monumentation evidence found and/or monument and accessories established to perpetuate the location of this corner. Sketch of relative location of monument, accessories, and reference points with course and distance to adjacent corner(s) (if determined in this survey). Method and rationale for reestablishment of lost or obliterated corner.

GLO RECORD: UNKNOWN.

MONUMENT FOUND: NOTHING FOUND.

MONUMENT SET: SET A 5/8" X 24" REBAR WITH A 2 1/2" ALUMINUM CAP DOWN 0.10' BELOW SURFACE OF OF STATE HIGHWAY 214. CAP STAMPED AS SHOWN BELOW.

REFERENCES: MONUMENT LIES IN THE CENTERLINE OF STATE HIGHWAY 214. SET MAG NAILS IN WOOD POST FOR REFERENCE. REFERENCES SHOWN BELOW.



Date of Field Work: 6-1-98

Office Reference: 98135

CROSS INDEX DIAGRAM

Firm/Agency, Address

STEIL SURVEYING SERVICES, LLC.

This corner record was prepared by me or under my direction and supervision.

1102 WEST 19th STREET

SEAL & SIGNATURE

CHEYENNE WY 82001

Telephone Number: (307) 634-7273

A	1	2	3	4	5	6	7	8	9	10	11	12	13	14	15	16	17	18	19	20	21	22	23	24	25
B																									
C	6	5	4	3	2	1																			
D																									
E																									
F																									
G	7	8	9	10	11	12																			
H																									
J																									
K																									
L	18	17	16	15	14	13																			
M																									
N																									
O																									
P	19	20	21	22	23	24																			
Q																									
R																									
S	30	29	28	27	26	25																			
T																									
U																									
V																									
W																									
X	31	32	33	34	35	36																			
Y																									
Z																									



BOOK 1524

Corner Name: WEST 1/4 Section: 32 T.13N R.62W 6th P.M. Cross-Index No.: X-5
SBRPEPLS/PLSW: March 1994

0582